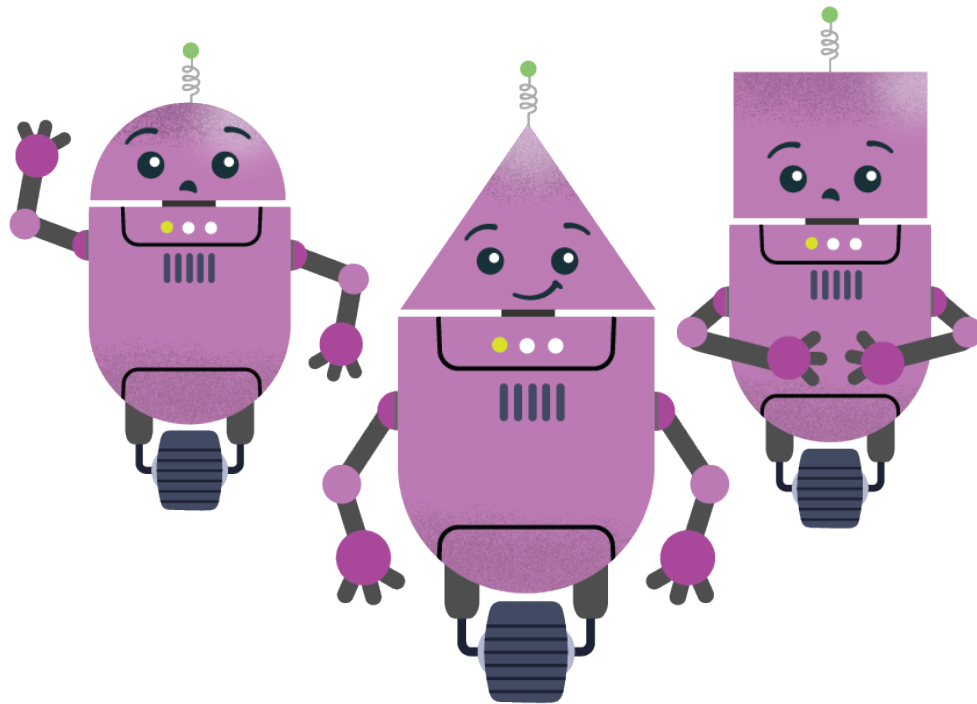
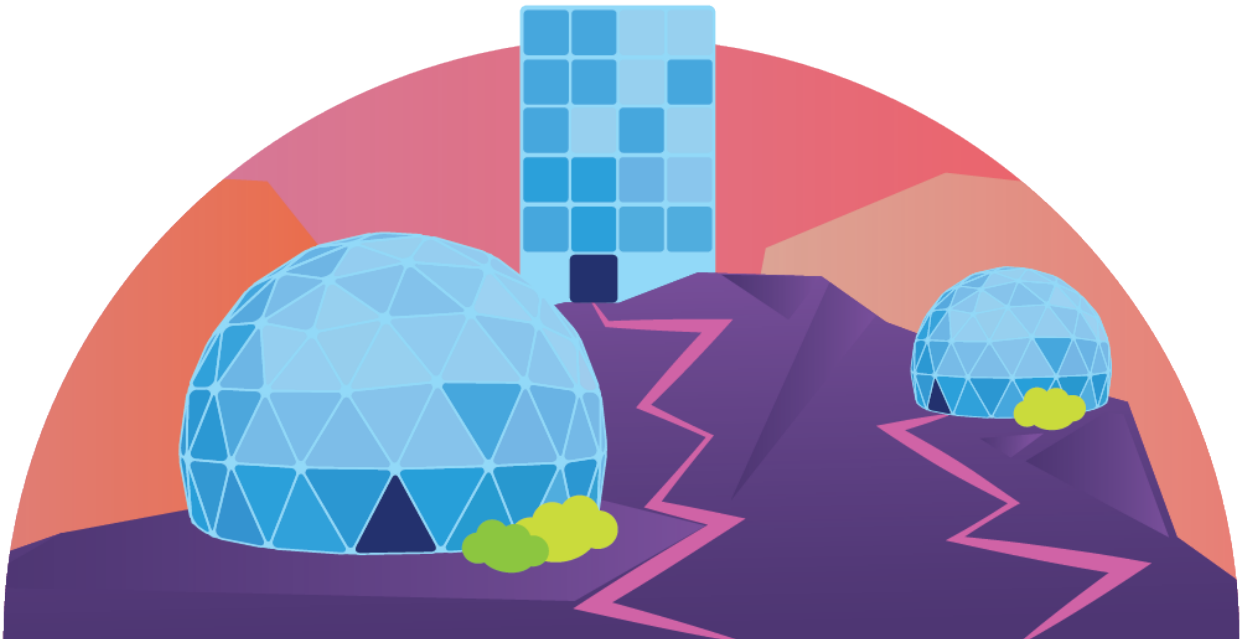




AMLIE

WORLD CARD

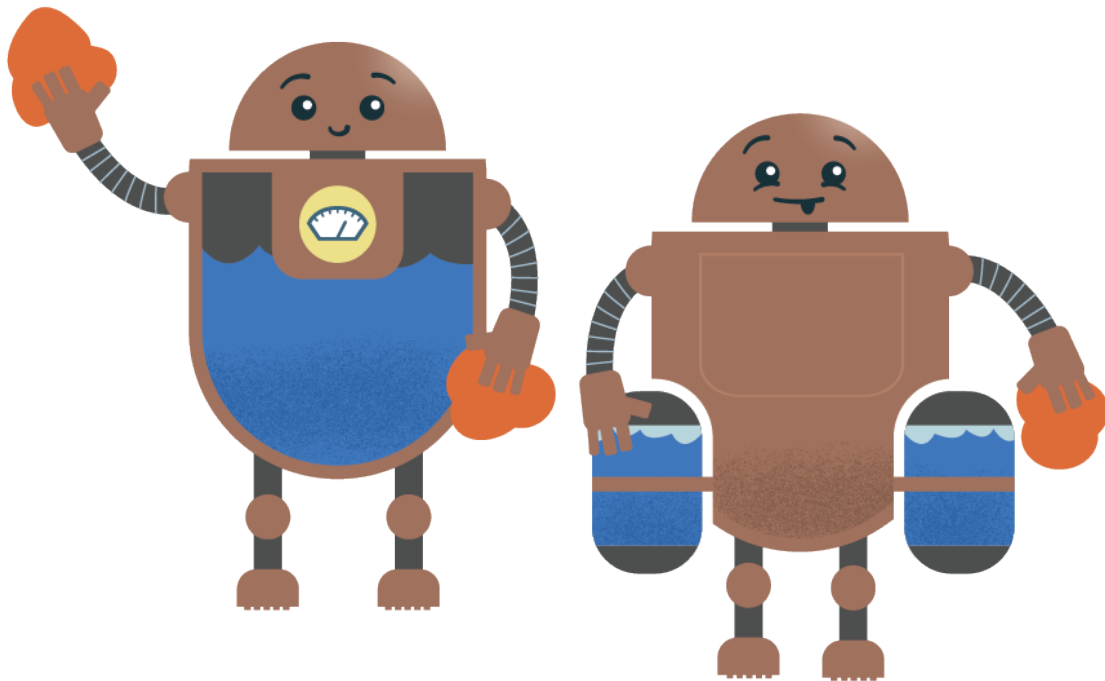


Questions to talk about

- What are the benefits and challenges of only having one type of robot lead?
- Consider your robot—could you be a leader in this world?
- What would be good about all robots being included and able to take on a leadership role?



INT WORLD CARD



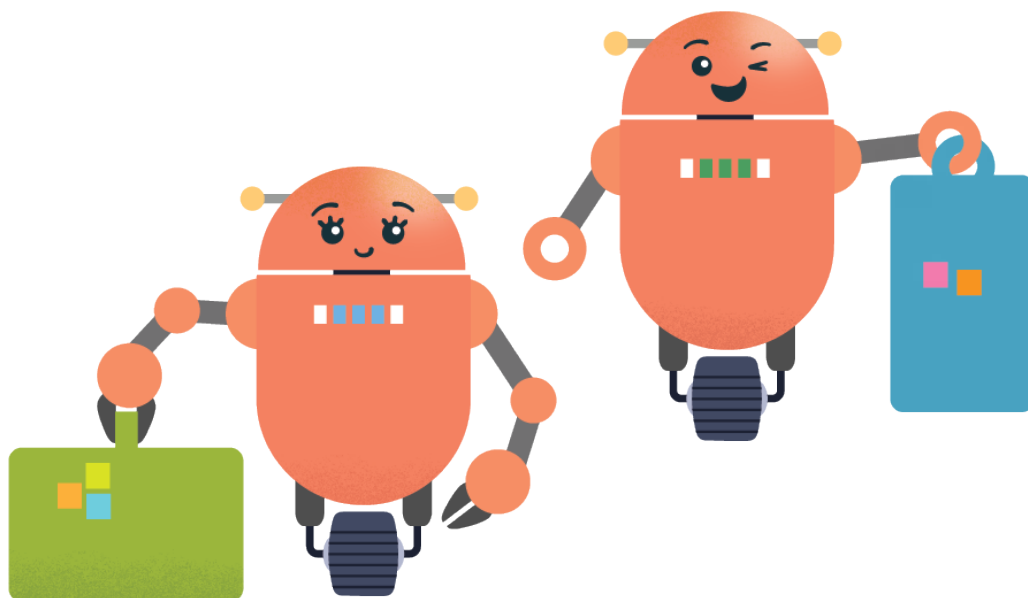
Questions to talk about

- Do you think the current system is fair? Why or why not?
- Consider your robot: Would they have an advantage or disadvantage?
- What could be changed to make the system fairer?



ARSCALY

WORLD CARD



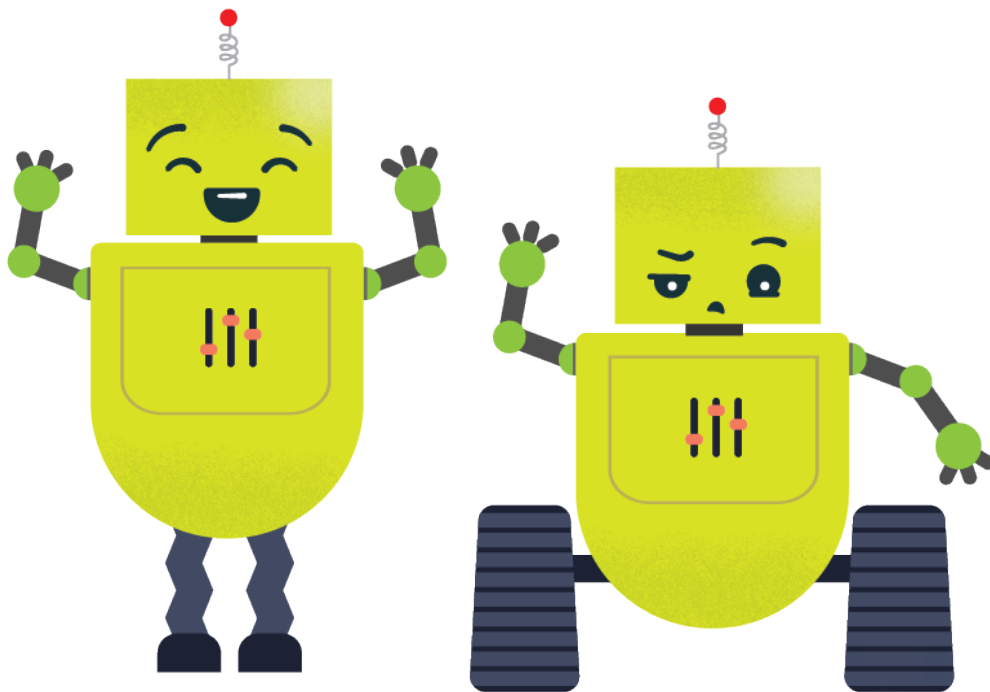
Questions to talk about

- What kind of research do you think the inventor had to do to make this?
- Do you think this case was designed with everyone in mind?
- What handle and size variations does our crew need, based on our robot designs? How many different designs is that?
- What questions should we ask when we are planning or designing something to make it easier for everyone to succeed in our world?



ORFNO

WORLD CARD



Questions to talk about

- Would your robot be able to see the whole world?
- How can those with wheels or tracks be included?
- Should the platforms be changed? Who is responsible for making the change?



EBARLIZ

WORLD CARD



Now that you have heard about the other worlds, what ideas can we bring back for our world? Don't forget, we want to make sure we are building a place where everyone can learn, grow and be themselves!

Questions to talk about

- What were the important things you learned from each world?
- What happens when one group is left out?
- What happens when everyone is able to participate?
- How can you create opportunities that support everyone?